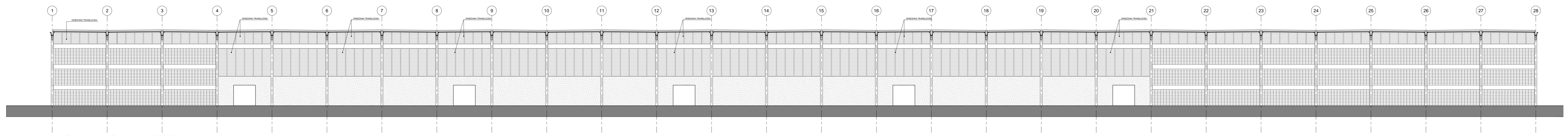
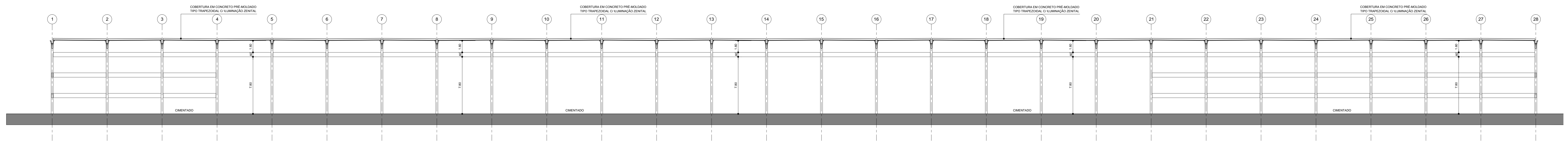


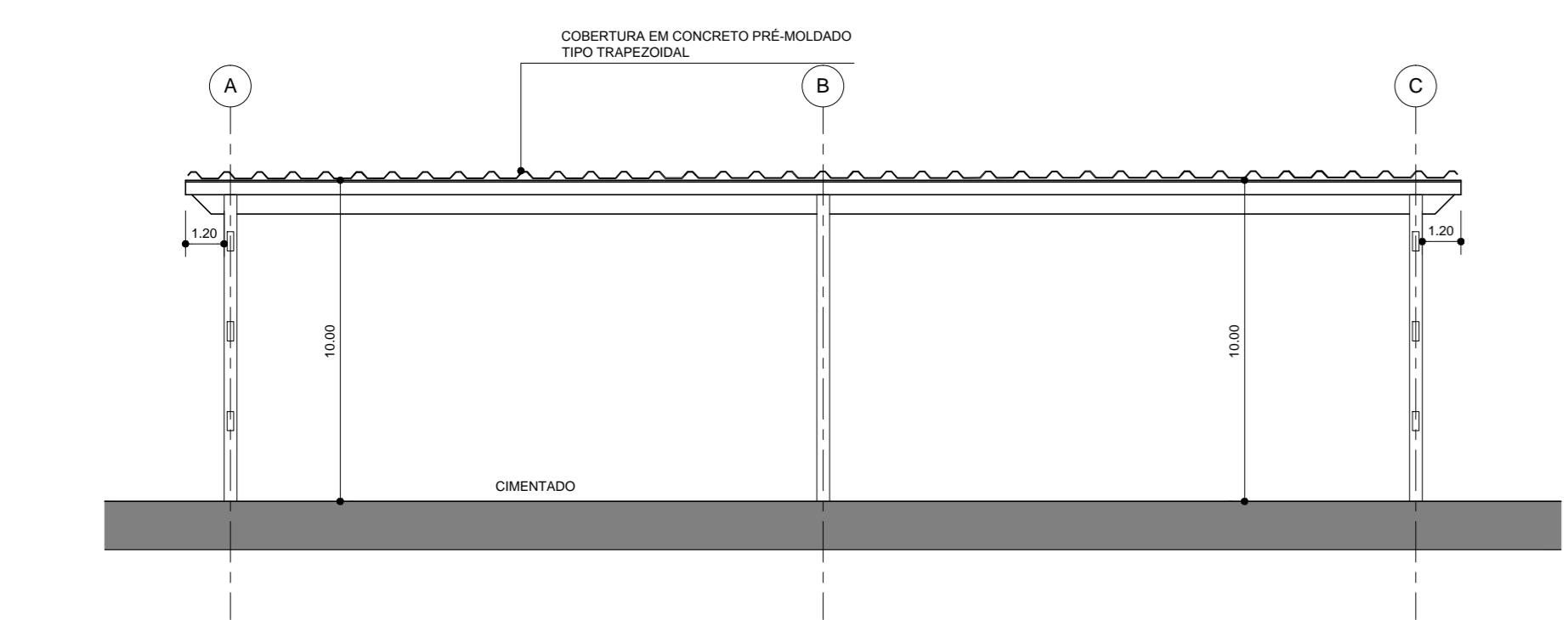
PLANTA DO BLOCO B GALPÃO - escala 1:200



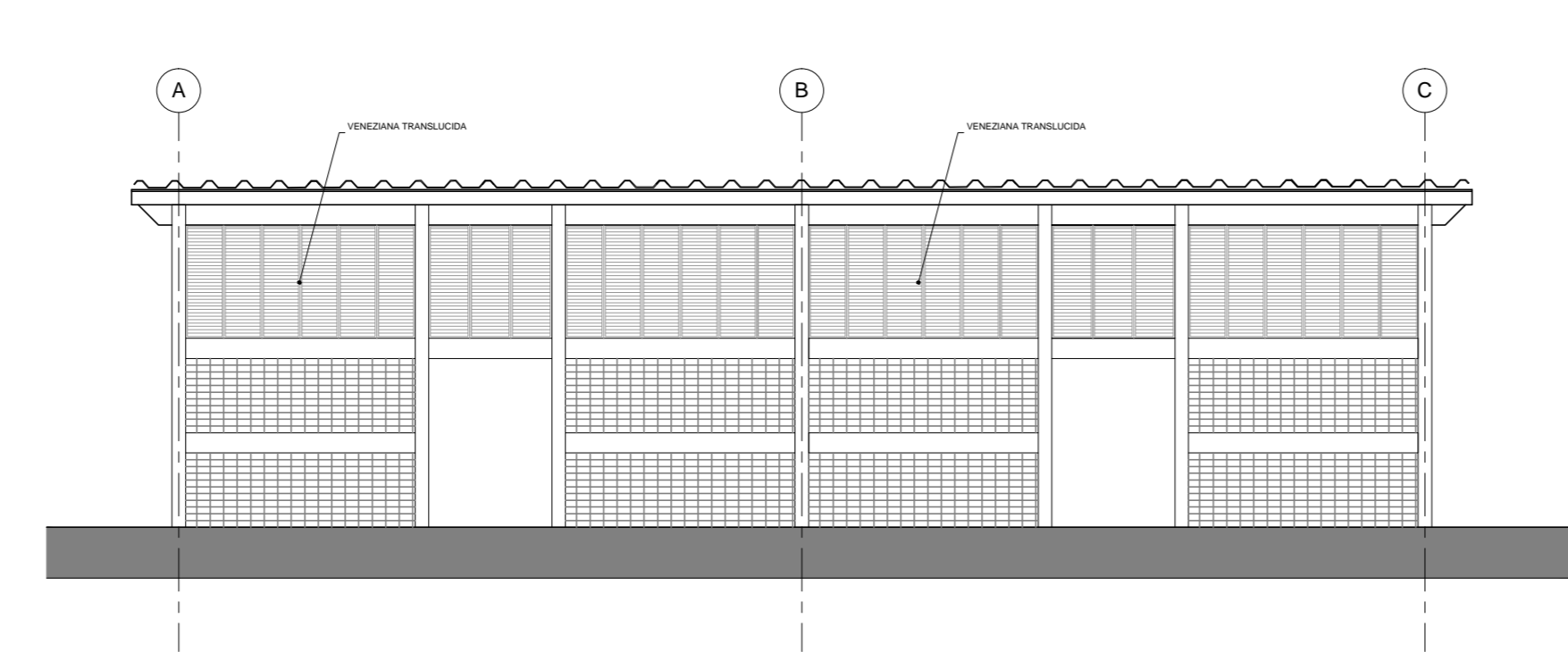
FACHADA FRONTAL BLOCO B - escala 1:200



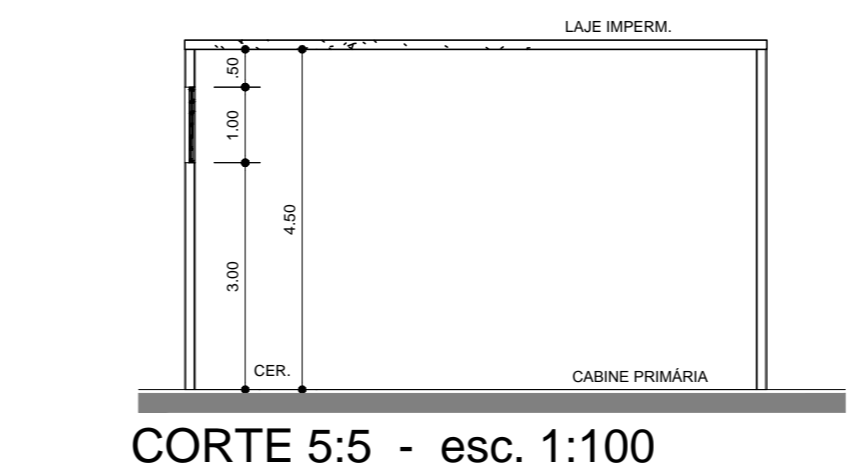
CORTE C:C - escala 1:200



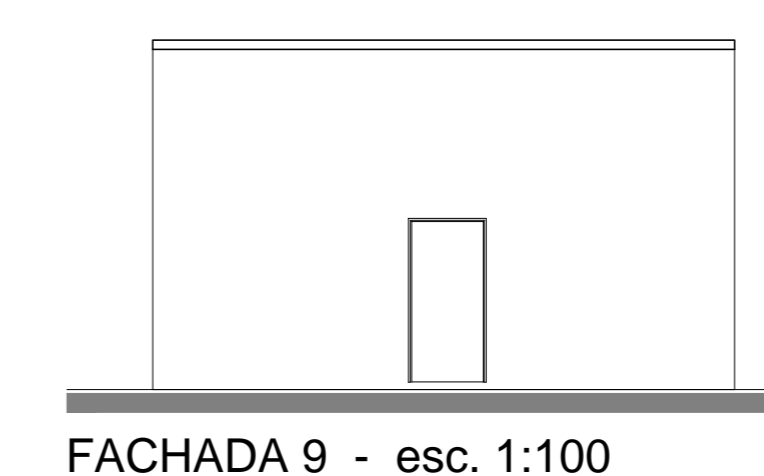
CORTE D:D - escala 1:200



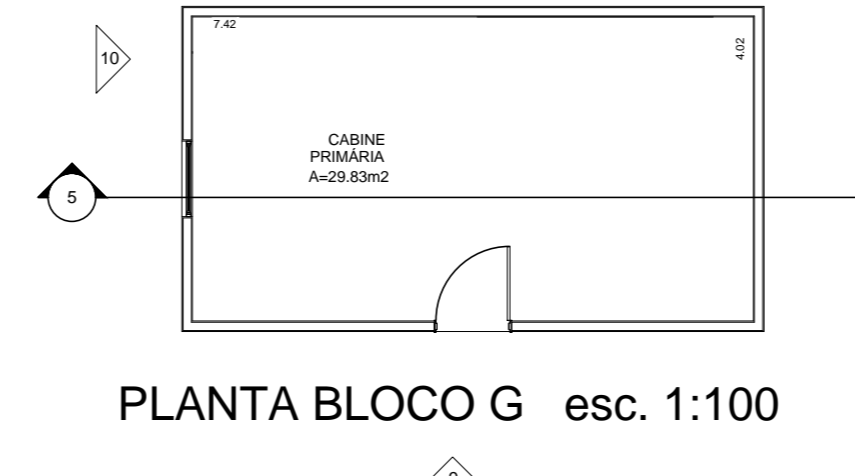
FACHADA LATERAL BLOCO B - escala 1:200



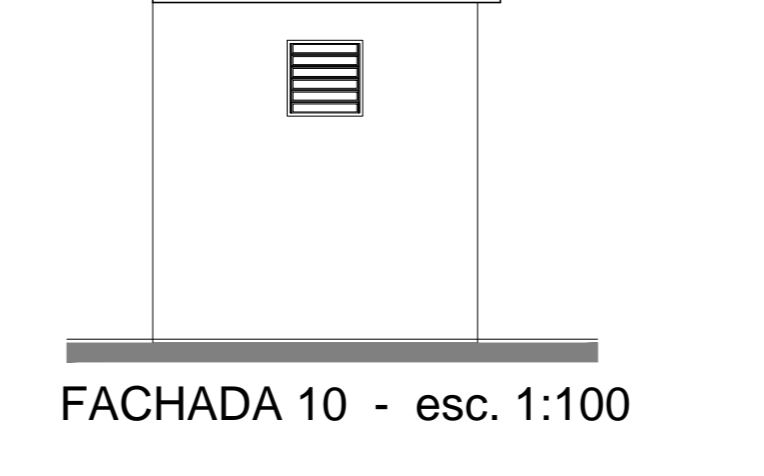
CORTE 5:5 - esc. 1:100



FACHADA 9 - esc. 1:100



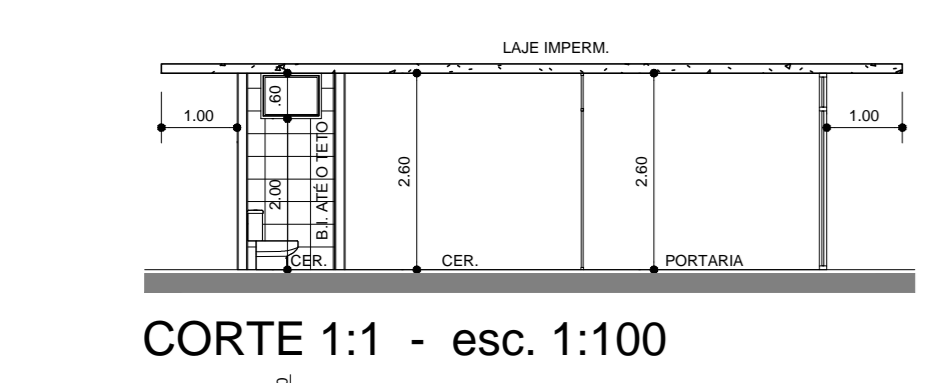
PLANTA BLOCO G esc. 1:100



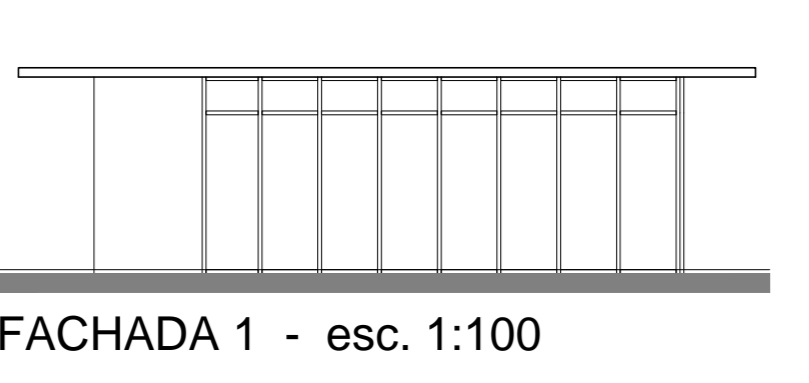
FACHADA 10 - esc. 1:100

LEGENDA

	A CONSTRUIR
	EXISTENTE A PERMANECER REGULARIZADO, CONF. PROC. Nº 2781/76



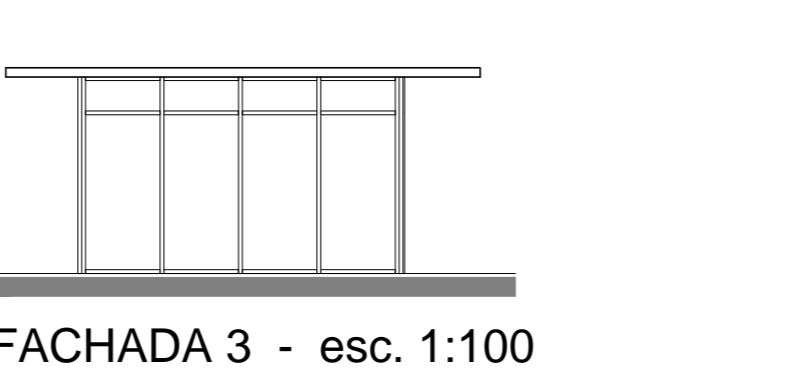
CORTE 1:1 - esc. 1:100



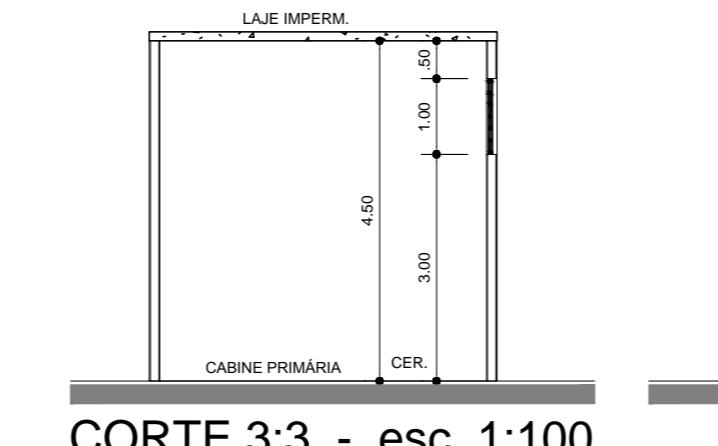
FACHADA 1 - esc. 1:100



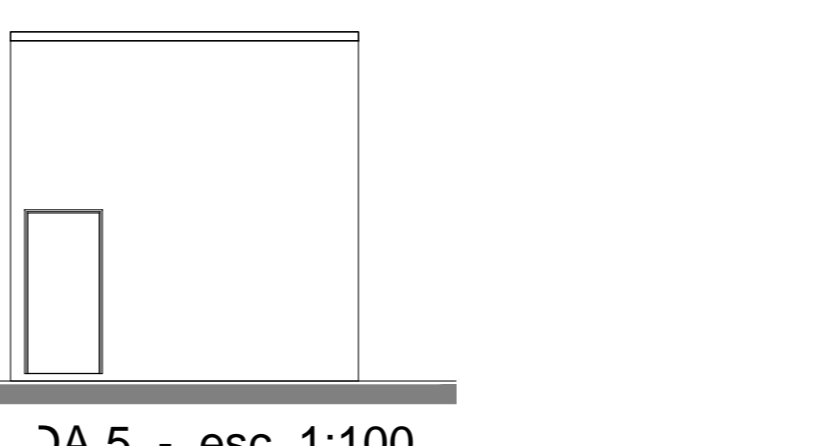
CORTE 2:2 esc. 1:100



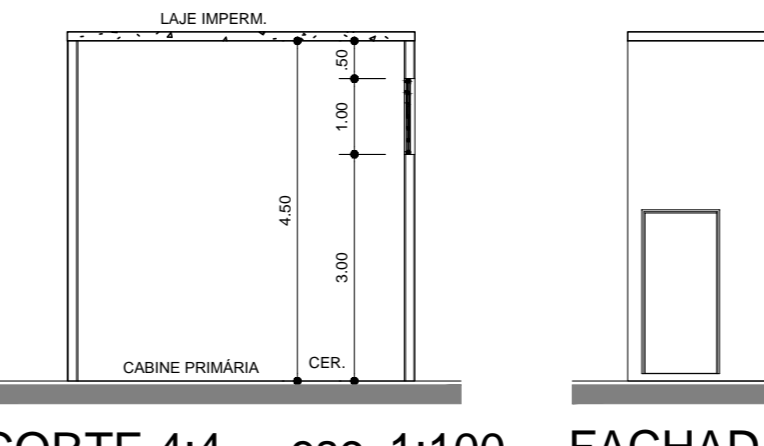
FACHADA 3 - esc. 1:100



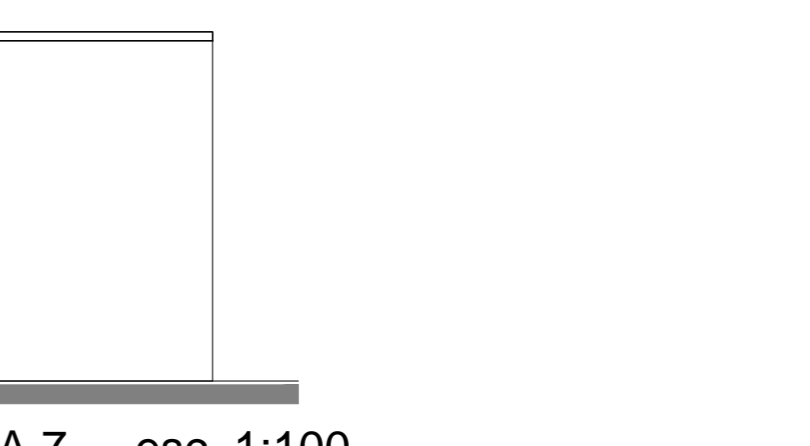
CORTE 3:3 - esc. 1:100



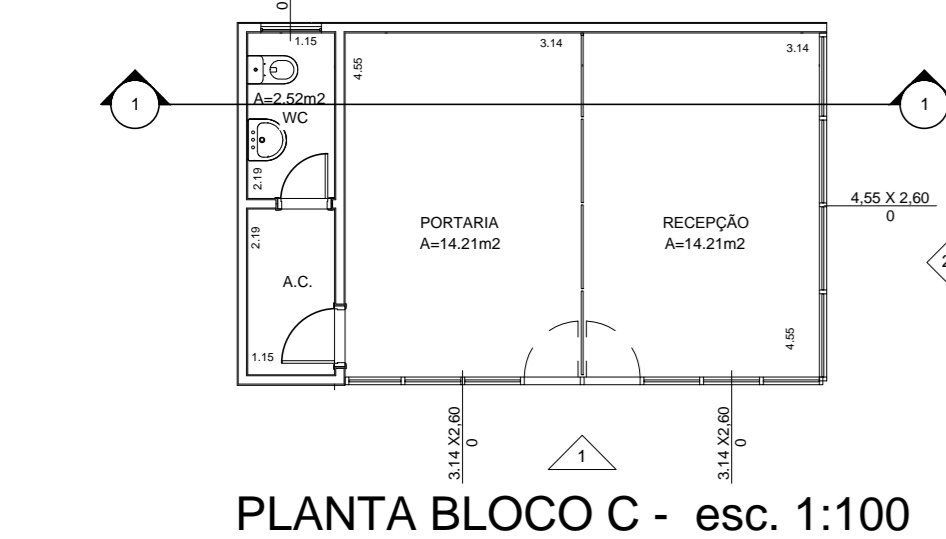
JA 5 - esc. 1:100



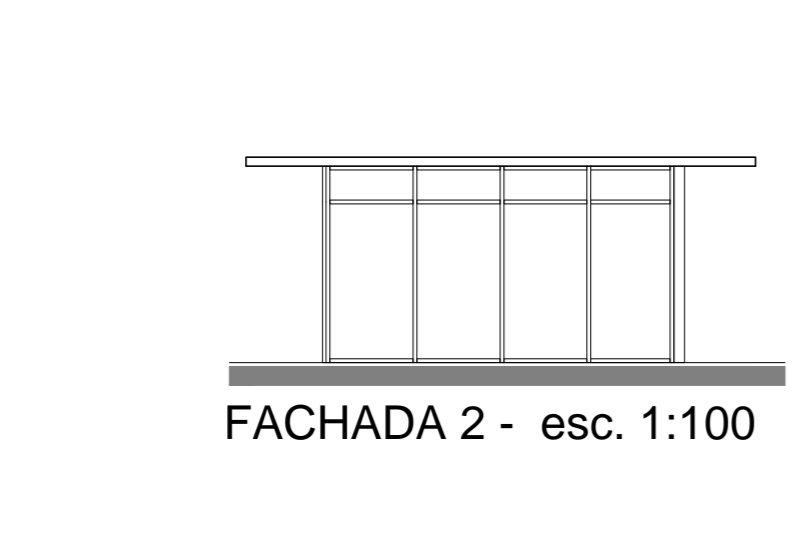
CORTE 4:4 - esc. 1:100



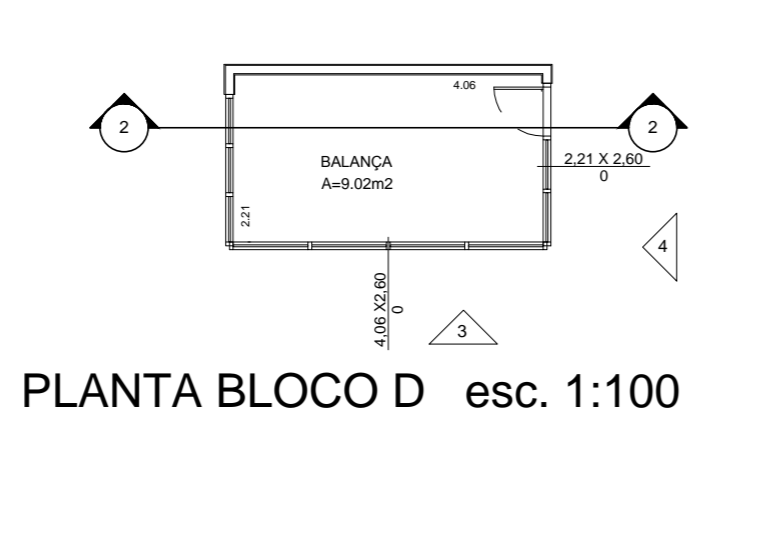
FACHADA 7 - esc. 1:100



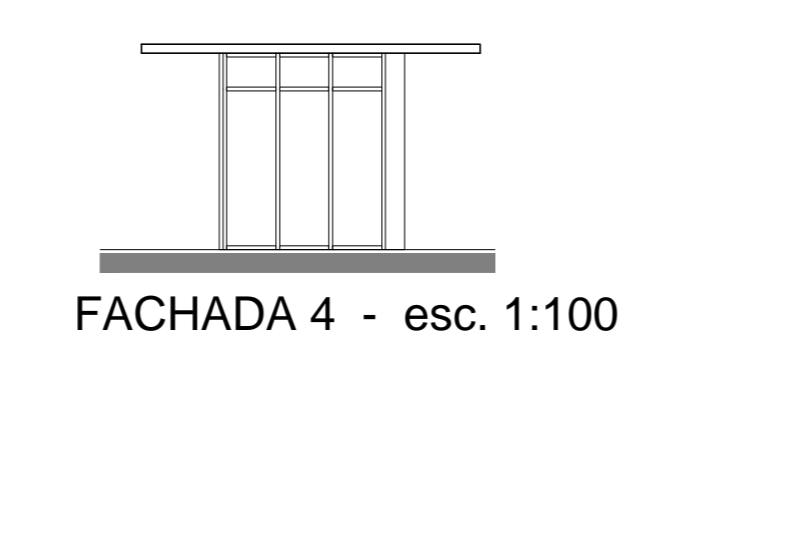
PLANTA BLOCO C - esc. 1:100



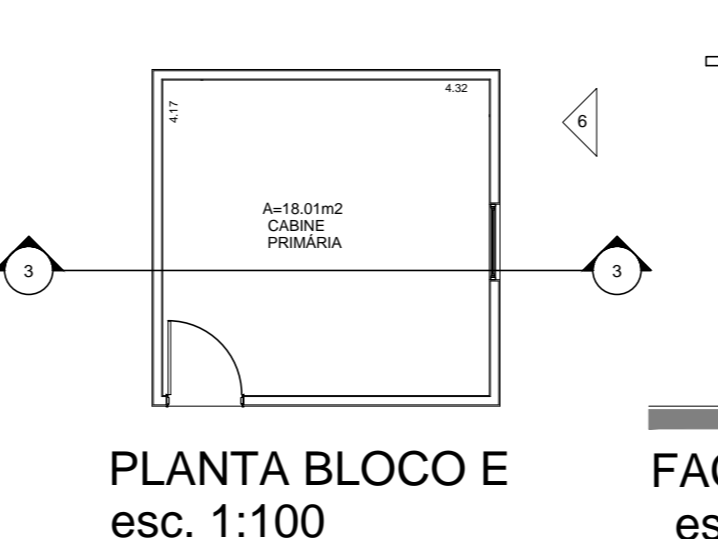
FACHADA 2 - esc. 1:100



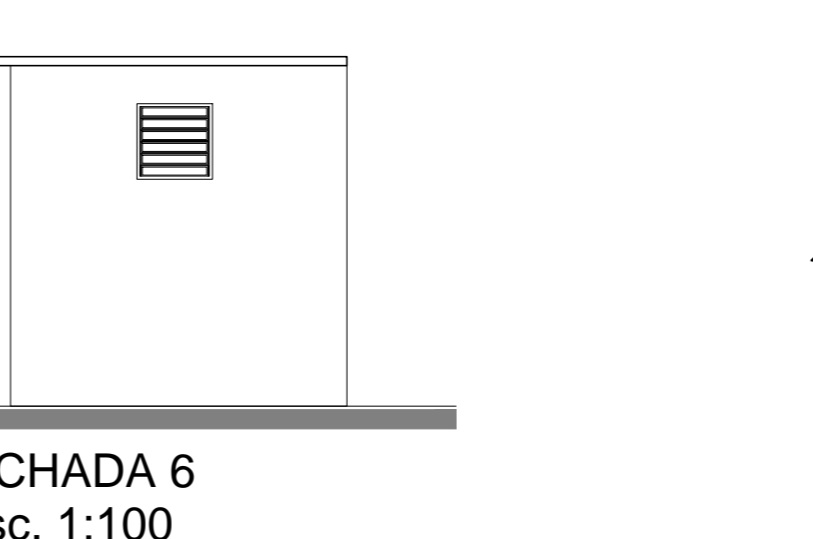
PLANTA BLOCO D esc. 1:100



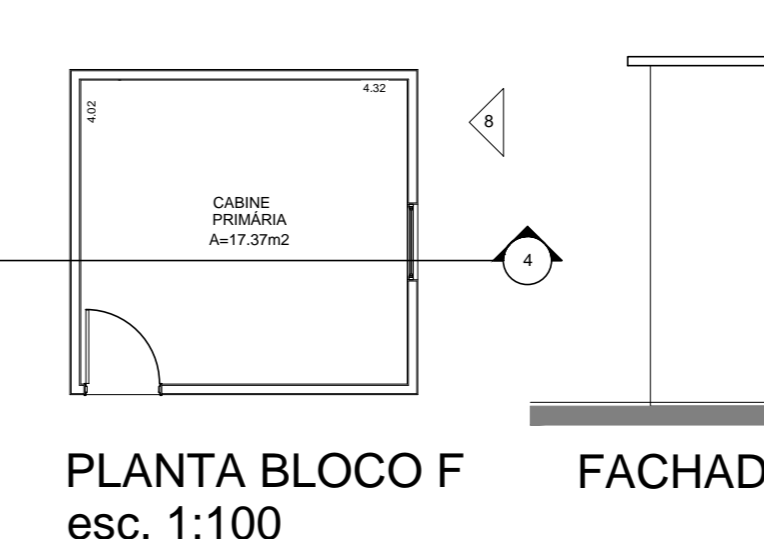
FACHADA 4 - esc. 1:100



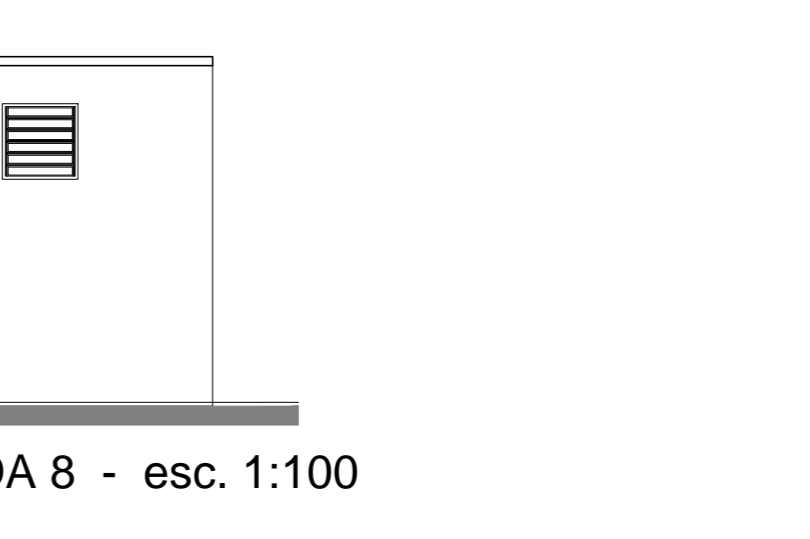
PLANTA BLOCO E esc. 1:100



FACHADA 6 esc. 1:100



PLANTA BLOCO F esc. 1:100



FACHADA 8 - esc. 1:100

ASSUNTO: BLOCO B: PLANTAS, CORTES E FACHADAS		FL. 03/03
PROJETO PARA REGULARIZAÇÃO DE UM EDIFÍCIO DE ESCRITÓRIOS E UM GALPÃO DE USO INDEFINIDO		
LOCAL: CAMINHO DO PINHEIRO, 2025 - ITAQUAQUECETUBA - SP		
PROP.: CONCREMIX - ENGENHARIA DE CONCRETO S.A.		
SITUAÇÃO DE ESCALA		ESCALA 1:200 e 1:100
VER FOLHA 01/03	PROF. FÉLIX TUPIN MEREZ - RG 1.813.973 - CPF 030.240.380-07	
VER FOLHA 02/03	PROF. ABRÃO TUPIN MEREZ - RG 1.483.428 - CPF 030.260.448-15	
ÁREAS	AUTOR DO PROJETO: IMACIO FÉLIX MEREZ - ENG. CIVIL - CREA 5.000/7988-11	
VER FOLHA 02/03	RESP. P/ OBRA: ALBERTO CALEGARI FALANES - ENG. CIVIL - CREA 5.000/7988-11 INSCR. MUNICIPAL: 96651 - ART. 823/2019/79862	